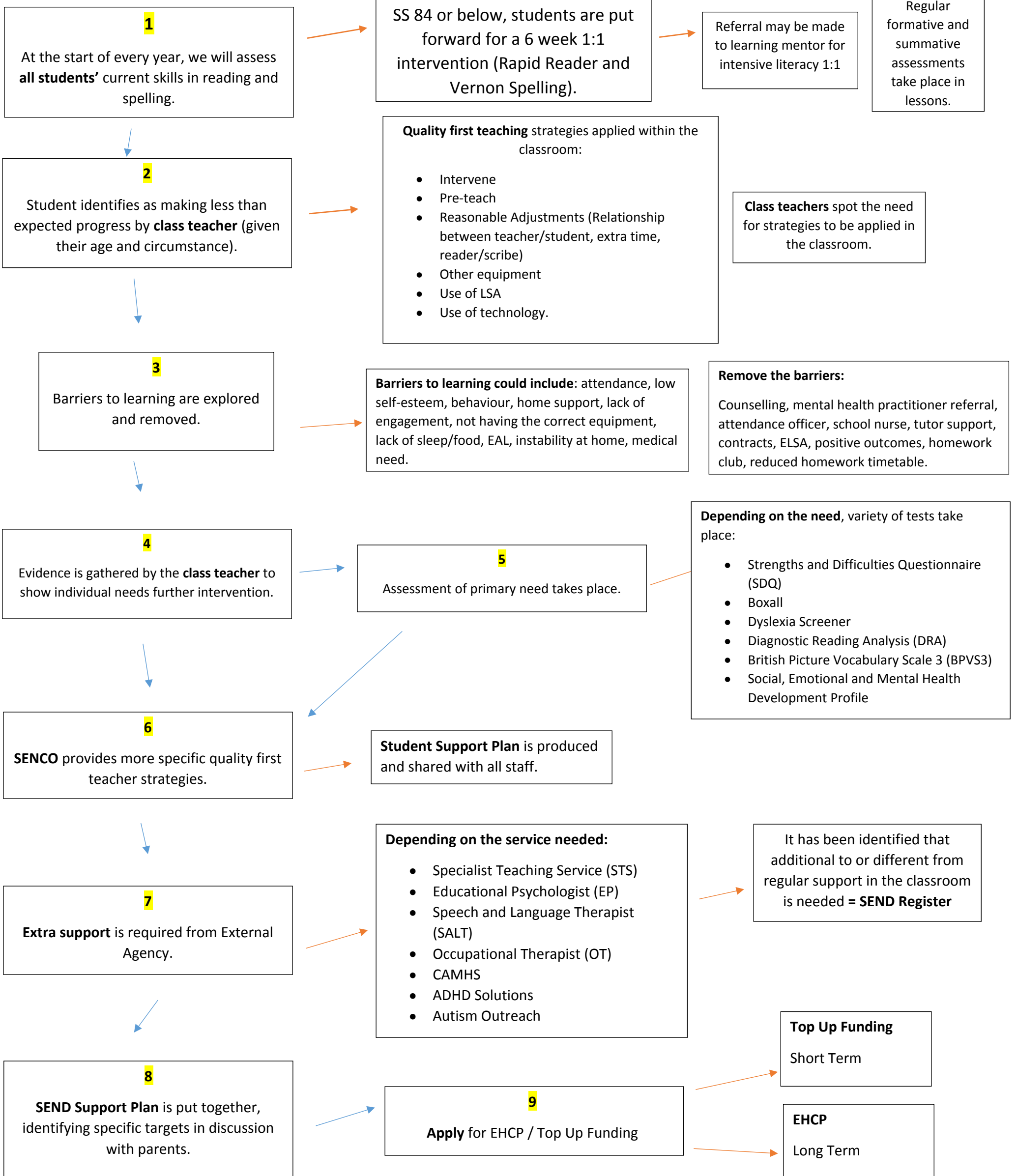


NEWBRIDGE SCHOOL

SEND IDENTIFICATION PROCEDURE

Legal Definition of SEN

A child or young person has a SEN if they have	A learning difficulty or disability	Which calls for <u>special</u> educational provision to be made for him or her.
--	-------------------------------------	---



SEN Provision is educational or training provision that is additional to or different from that made of children or young person of the same age.