



Medication Policy and Management Procedure

March 2022

Date of Next Review – September 2022

Section	Contents	Page
1	Introduction	3
2	Medication Policy Statement	4
3.	Medication Management Procedures	5
	3.1 Roles and Responsibilities	6
	3.2 Training / Qualifications	8
	3.3 Managing Medicines on School Premises	9
	<ul style="list-style-type: none"> • liability / indemnity • individual healthcare plans • administering medication • record keeping • storage • controlled drugs • unacceptable practice • Complaints procedure 	
	3.4 Managing medications on Trips / outings / residential visits	18
	3.5 Emergency Procedures	19
	3.6 Further Guidance and References	20
	3.7 Templates / Appendices	21
	<ul style="list-style-type: none"> • Appendix 1: model IHCP flowchart • Appendix 2: letter for consent to use emergency inhaler • Appendix 3: letter to inform of use of emergency inhaler • Appendix 4: letter for consent to use emergency auto injector • Appendix 5: body map 	
	<ul style="list-style-type: none"> • Template A: individual healthcare plan (IHCP) • Template B: parental agreement for setting to administer medicine • Template C: record of medicine administered to an individual child • Template D: record of medicine administered to all children • Template E: staff training record – administration of medicines 	

Apollo Partnership Trust – The Newbridge School (TNS)

Section 1

Introduction

This policy has been developed for TNS school to ensure Students/students are fully supported with medical conditions. It has been developed in line with the Department for Education statutory guidance on Supporting Students with Medical Conditions (2014) For Governing Bodies of Maintained Schools and Proprietors of Academies in England December 2015, last updated August 2017.

<https://www.gov.uk/government/publications/supporting-pupils-at-school-with-medical-conditions--3>

This policy has not been developed by a specific medical professional or organisation / body.

Apollo Partnership Trust – The Newbridge School (TNS)

Section 2

Medication Policy Statement

Section 100 of the Children and Families Act 2014 places a duty on governing bodies of maintained schools, proprietors of academies and management committees of student referral units (PRUs) to make arrangements for supporting Students at their school with medical conditions.

The aim of this policy is to ensure that TNS carries out their statutory duty to make arrangements to support Students at school with medical conditions.

TNS will

- ensure that the arrangements detailed within this policy are implemented effectively, by the Co-Heads of School, who have overall responsibility for policy implementation.
- administer prescribed, and non-prescribed medications, to support a student's continuous attendance at school, when written consent has been provided by a parent/carer (see Template B).
- have clear roles and responsibilities to be able to support Students so that they have full access to education, including school trips and physical education.
- ensure full co-operation with all relevant parties; healthcare professions, local authority and clinical commissioning groups (CCGs) as required
- provide support and training to enable staff to support Students with medical conditions
- ensure that clear arrangements are in place to manage the administration and storage of all medicines on the premises
- ensure that the appropriate level of insurance is in place to appropriately reflect the level of risk
- ensure that written records are kept of all medicines administered to Students
- ensure that emergency procedures are in place and shared with all staff
- ensure that all staff are aware of what practice is not acceptable
- ensure that a complaints procedure is in place regarding the support provided to a student with a medical condition

Apollo Partnership Trust – The Newbridge School
Section 3
Medication Management Procedures

The following sections in the Management Procedures outline how TNS will ensure that the Medication Policy Statement is implemented.

Further reference documentation and guidance is detailed at the end of the policy.

Apollo Partnership Trust – The Newbridge School

Section 3.1

Roles and Responsibilities

The Governing Body:-

- must make arrangements to support Students with medical conditions in school, including making sure that this policy is implemented.
- should ensure that Students with medical conditions are supported to enable the fullest participation possible in all aspects of school life.
- should ensure that sufficient staff have received suitable training and are competent before they take on responsibility to support children with medical conditions.
- should ensure that any members of school staff who provide support to Students with medical conditions are able to access information and other teaching support materials as needed.

The Co-Heads of School:-

- should ensure that the school's policy is developed and effectively implemented with all partners. This includes ensuring that all staff are aware of the policy for supporting Students with medical conditions and understand their role in its implementation.
- should ensure that all relevant staff, including external providers, i.e. Before/After School and activity clubs, are aware of student's conditions.
- should ensure that sufficient trained numbers of staff are available to implement the policy and deliver against all individual healthcare plans, including in contingency and emergency situations.
- should make sure that school staff are appropriately insured, and are aware that they are insured to support Students in this way.
- should be aware that they have overall responsibility for the development of individual healthcare plans
- should contact the school nursing service in the case of any child who has a medical condition that may require support at school, but who has not yet been brought to the attention of the school nurse.

School Staff:-

- should be aware that they may be asked to provide support to Students with medical conditions, including the administering of medicines, although they cannot be directed to do so unless it is within the staff member's contract.
- should take into account the needs of Students with medical conditions that they teach, although administering medicines is not part of teachers' professional duties.
- should receive sufficient and suitable training and achieve the necessary level of competency before they take on responsibility to support children with medical conditions

- should know what to do and respond accordingly when they become aware that a student with a medical condition needs help

School Nurse:-

- should be aware of their responsibilities for notifying the school when a student has been identified as having a medical condition which will require support in school
- can support staff on implementing a student's individual healthcare plan and provide advice and liaison, for example, on training
- can liaise with lead clinicians locally on appropriate support for the student and associated staff training needs

Other healthcare professionals (including GP, paediatricians, nurse specialists/ community paediatric nurses):-

- should notify the school nurse and work jointly when a student has been identified as having a medical condition that will require support at school.
- may provide advice on developing healthcare plans
- specialist local health teams may be able to provide support in schools for Students with particular conditions (e.g. asthmas, diabetes, epilepsy)
- should ensure any prescribed medications, including dosages, are appropriately monitored and reviewed.

Students:-

- should be fully involved in discussions about their medical support needs and contribute as much as possible to the development of, and comply with, their individual healthcare plan

Parents/Carers:-

- should provide the school with sufficient and up to date information about their son/daughter's medical needs
- should be involved in the development and review of their son/daughter's individual healthcare plan
- should carry out any action they have agreed to as part of its implementation (e.g. provide medicines and equipment and ensure that they or another nominated adult are contactable at all times)

Apollo Partnership Trust – The Newbridge School

Section 3.2

Training / Qualifications for Supporting Students with a Medical Condition

Specific support and training needs will be identified through the Individual Health Care Plans (IHCP), together with who will provide the training. This will enable staff who support a student with a medical condition to understand the specific conditions, their implications, preventative and emergency procedures.

The TNS will ensure that adequate first aid cover is available at all times. The first aider role is key in emergency procedures – see section 3.5. However, a first aid certificate does not constitute appropriate training in the general day to day support of a student with a medical condition.

Training on administering medications/injections for specific medical conditions at the TNS will be organised by the Medical Officer.

Named staff will be responsible for administering a student's medication. When a controlled drug has been prescribed for a student's medical condition, at least two members of staff should be trained on how to manage this medication.

Arrangements should be in place to cover staff absence, or staff turnover, so that someone is always available.

All training should be documented on Department for Education's Template E, together with a clear plan for refresher sessions, or updates if the student's condition changes.

The TNS will ensure that whole school awareness training will take place annually. This should include the contents of this policy, and awareness of common conditions such as asthma allergies, epilepsy and diabetes.

It is recognised that it is not a requirement to have specific training to administer non-prescribed medications such as pain relief or antihistamines.

The medicine box is kept in the Admin office and all staff who work in this area must be aware of:-

- what medication is in the box
- who it belongs to and a copy of the parental consent – see Template B
- the dose and frequency of administration to the Students concerned
- who will administer this medication

Apollo Partnership Trust – The Newbridge School

Section 3.3

Managing Medicines on School Premises

LIABILITY AND INDEMNITY

The TNS will ensure that a level of insurance is in place that appropriately reflects the level of risk for managing medication on the premises. The Department for Education's guidance for "Supporting Students at School with Medical Conditions 2015" refers to the appropriate level of insurance being in place, or that the TNS is a member of the Department for Education's Risk Protection Arrangements (RPA). RPA is a scheme provided specifically for academies.

<https://www.gov.uk/guidance/academies-risk-protection-arrangement-rpa>

The insurance arrangements will cover staff providing support to Students with medication conditions. Insurance policies should be accessible to staff providing such support.

The level and ambit of insurance cover required must be ascertained directly from the insurers. Any requirements of the insurance, such as the need for staff training, should be complied with. Insurers should be updated when a student is newly diagnosed, if a student's condition changes resulting in extra support needs, or if a student with a medical condition leaves the TNS.

INDIVIDUAL HEALTH CARE PLAN (IHCP)

An Individual Healthcare Plan – see Department for Education's Template A - will be used to record the support of an individual student for their medical condition. The IHCP is developed with the student (where appropriate), parent/carer, designated named member of school staff, specialist nurse (where appropriate) and relevant healthcare services. Appendix 1 is a Department for Education model flowchart for an IHCP.

Where a child has SEND but does not have an EHCP, their special educational needs are mentioned in their IHCP.

The IHCP will cover the following:-

- the medical condition, its triggers, signs, symptoms and treatments
- the student's resulting needs, including medication (dose, whether it is a controlled drug, side effects and storage) and other treatments, time, facilities, equipment, testing, access to food and drink where this is used to manage their condition, dietary requirements and any environmental issues (crowded corridors, travel time between lessons)
- specific support for the student's educational, social and emotional needs – for example how absences will be managed, requirements for extra time to complete exams, rest periods or additional support in catching up with lessons
- the level of support needed, including emergencies. If a student is self-managing their medication, this should be clearly stated with appropriate arrangements for monitoring

- who will provide this support, their training needs, expectations of their role and confirmation of proficiency to provide support for the student's medical condition from a healthcare professional; and cover arrangements for when they are unavailable
- who in the school needs to be aware of the student's condition and the support required
- arrangements for written permission from parents and the headteacher for medication to be administered by a member of staff, or self-administered by the student during school hours
- where confidentiality issues are raised by the parent/child, the designated individuals to be entrusted with information about the student's conditions
- emergency plans, including whom to contact and contingency arrangements.

The TNS will keep a centralised register of IHCPs, and identify a member of staff to have responsibility for this register (The Medical Officer)

IHCPs will be reviewed regularly, at least every year, or whenever the student's needs changes. The parent/carer must inform TNS when their child's/children's needs change, and provide details of what those changes are.

The parents/carers, specialist nurse (where appropriate) and relevant healthcare services should hold a copy of the IHCP. Other school staff will be made aware of, and have access to the IHCP for the Students directly in their care.

ADMINISTERING MEDICATIONS

Medication will only be administered when it would be detrimental to a student's health or school attendance not to do so.

The TNS will not give any medication (prescribed, or non-prescribed) to a child under 16 without a parent's written consent except in exceptional circumstances under direction of a medical professional.

Pain relief, anti-histamine and cough relief mixtures IF THE TNS ADMINISTERS NON-PRESCRIBED PAIN RELIEF OR COUGH MIXTURES

When administering pain relief, anti-histamine or cough relief medication, the member of staff will check the maximum dosage and when a previous dose was given. Parents/carers will be informed of all doses given at school – see Template C. The TNS will only give non-prescription medicines to Students for a maximum of 3 days, even where parents give permission. The only exemption to this is if pain relief is required during the healing period of an injury such as a sprained joint, or broken/fractured limb.

A child under 16 years of age should never be given medicine containing Aspirin unless prescribed by a healthcare professional.

Some medicines need to be given at specific times, for example

- before, with or after food – the absence/presence of food in the stomach can affect how the medicine works and may cause unwarded effects

- some illness can only be controlled with very precise dose timings, for example, seizures may only be controlled if the medication is taken at set times

Non-prescribed medications administered to Students, whilst in the care of the school, will be communicated to parent/carers.

Schools must have robust communication procedures in place to ensure that any information relating to the administration of medications, whilst in their care, is shared with external providers. For example, extra curriculum activity, including Before and After School clubs, whether led by the school or an external provider.

Oral Mixtures

A measuring spoon/syringe/vessel must be provided by the parent/carers, and the dose of medicine is measured using this. Instructions on the medication label must be followed. Wherever possible, the spoon/syringe/vessel should be handed to the student for them to administer the dose themselves. Each individual student's spoon/syringe/vessel should be cleaned and kept with their own medication.

Tablets/capsules

Students who need tablets usually take them before or after their meal according to their GP's instructions. They may however be needed at other times of the day.

Students should go to the admin office and ask for their tablets from the appropriate member of staff (see Training)

Inhalers

Inhalers will be kept by the student, unless there is a specific reason why this is not appropriate, which must be documented in the IHCP. When the student needs to take their inhaler, e.g. before a PE lesson, or at break time/lunchtime, the teacher/admin staff should record this on a daily record. Where a child increases the number of times they need their inhaler, staff will be alerted to this by the record, and they are able to pass this information onto the parents, so that the 'preventer' inhaler dose can be checked by their GP.

Students are trained how to access and use their inhaler by a medical professional. If they have any difficulty, the Medical Officer should be called to assist.

Emergency Salbutamol Inhalers

The TNS has chosen to hold an emergency inhaler for use by Students who have been diagnosed with asthma and prescribed a reliever inhaler, OR who have been prescribed a reliever inhaler.

Written parental consent for its use has been obtained, and a record of this is kept with the emergency inhalers to establish which Students have this in place. The Medical Officer is responsible for ensuring that this register is reviewed and kept up to date. This information will also be included on the student's Asthma Form

If there is an emergency situation whereby consent has not been received, either for a student with diagnosed asthma, or for a student with no previous history or knowledge of asthma and symptoms suggest an asthma attack is occurring, the emergency services will be called. If advised to do so by

the emergency services, the emergency inhaler will be used even where consent has not been received and full details of the advice given and dosage administered will be recorded.

An emergency kit is in place, kept in the main office, which includes:-

- a salbutamol metered dose inhaler
- at least two plastic spacers
- instructions on using the inhaler and spacer, together with cleaning/storage instructions

To avoid possible risk of cross-infection, the plastic spacer should not be reused. It can be given to the student to take home for future personal use. The inhaler can be cleaned and reused.

If a student has used the emergency inhaler, their parent/carer will be informed as soon as possible. This will be completed by the Medical Officer

A “Guidance on the use of Emergency Salbutamol Inhalers in School” consent form template, to be completed by parent/carers template is attached– See Appendix 2.

A “Guidance on the use of Emergency Salbutamol Inhalers in School” specimen letter to inform parents of the use of an emergency inhaler is attached - see Appendix 3.

Further information can be found in the Department of Health’s “Guidance on the user of emergency salbutamol inhalers in school – March 2015”

https://www.gov.uk/government/uploads/system/uploads/attachment_data/file/416468/emergency_inhalers_in_schools.pdf

Emergency Medication for Anaphylactic Shock

Students with a known allergy, for example, to wasp stings, food allergies and medications, should have an Individual Health Care Plan (IHCP), with an emergency action plan, completed by their healthcare professional.

Where an adrenaline auto-injector has been prescribed, the student’s parent/carer should ensure that two in date adrenaline auto injectors (e.g. an Epi Pen) are kept in the school. If appropriate, the student may keep an auto injector on their person – refer to the section on Self-Management. If this is not appropriate, the auto injector should be kept safely in the student’s classroom. The second auto-injector should be kept in the First Aid grab Bag in the main office and be available for administering if the student goes into anaphylactic shock.

If a student is going into anaphylactic shock, the emergency services will be called immediately – see Emergency Procedures 3.4.

If there is an emergency situation where a student has no previous history or knowledge of having an allergy but symptoms suggest anaphylactic shock is occurring, the emergency services will be called. If advised to do so by the emergency services, another student’s auto-injector will be used even where consent has not been received and full details of the advice given and dosage administered will be recorded.

Emergency Adrenaline Auto-Injector (please delete if this is not applicable)

The TNS has chosen to hold an emergency Adrenalin Auto-Injector to be administered to Students in an emergency if the student's own prescribed auto-injector cannot be administered correctly without delay.

Written parental consent for its use has been obtained, and a record of this is kept with the emergency injector to establish which Students have this in place. The Medical Officer is responsible for ensuring that this register is reviewed and kept up to date. This information will also be included on the student's IHCP.

Injections

School staff will not give a student an injection unless staff have agreed and specific training to do so has been delivered. This training will be delivered by the School Nurse or Healthcare Professional.

Ointments/creams

The TNS will only administer ointments/creams prescribed by healthcare professionals. All efforts should be made for the student's ointment/cream to be applied at home by parent/carers. If it is necessary to apply a prescribed dose during school hours, this should be recorded on Template C.

If it is a long-term prescription (i.e. more than 4 weeks), a Healthcare Plan should be provided by the student's healthcare professionals.

The student will be encouraged to apply the cream/ointment themselves, under supervision from a member of staff. Where this is not possible due to competency or location area on the body then Department for Education's Template B should be completed. A body map should be completed for the area where the cream/ointment is to be applied – See Appendix 4.

Eye, Nose and Ear Drops

The TNS will only administer ear, nose or eye drops prescribed by healthcare professionals. All efforts should be made for the student's ear, nose or eye drops to be applied at home by parent/carers. If it is necessary to apply a prescribed dose during school hours, this should be recorded on Department for Education's Template C. The drops should be administered, following the label's instructions by a member of staff. Good infection prevention practice should be adhered to, i.e. using a clean environment, with handwashing facilities immediately available.

SELF MANAGEMENT

It is good practice to support and encourage Students, who are able, to take responsibility to manage their own medicines from a relatively early age, and the TNS will encourage Students to manage the use of their inhalers and adrenaline auto injectors (Epi-Pens) accordingly. The TNS acknowledges that the age at which Students are ready to take care of and be responsible for,

their own medication varies. Health professionals need to assess, with parents and student, the appropriate time to make this transition.

REFUSAL TO TAKE MEDICINE

If a student refuses to take their medication, staff should not force them to do so. If a prescribed condition critical medication/injection is refused, the TNS must take prompt action by informing the parent/carer and healthcare professional as soon as possible, as outlined in their IHCP.

If a student refuses to take a non-prescribed medication, this should be recorded in the student's records. Parent/carers should be informed of the refusal on the same day.

If a refusal to take medication results in an emergency, the TNS's emergency procedures should be followed – see Section 3.4.

STORAGE AND ACCESS

All medications should be stored safely. Students with medical conditions should know where they are at all times and have access to them immediately.

The TNS should provide cold storage for medications once opened, if required, as directed by prescription/written instructions from a healthcare professional.

Medications should not be stored in any first aid boxes on the premises.

The TNS should only accept medication that is in date, labelled and in its original container including prescribing instructions for administration.

Medicine (*with the exception of individual inhalers*) should be stored in a named Medical Box with each student's medicine clearly marked with the student's name and the dose to be taken. A photograph of the student can be attached to the medication for clear identification. Facilities should be available to ensure that the medications are stored at the correct temperature if stated on the medication label/IHCP.

It is essential that a Students' emergency medication is immediately accessible for that student, if participating in an extra curriculum activity, including Before and After School clubs, whether led by the school or an external provider.

Parents/carers should be asked to collect all medications/equipment at the end of the school term, and to provide new and in date medication at the start of each term.

RECORD KEEPING

As part of the TNS's admissions process and annual data collection exercise parents/carers are asked if their son/daughter has any medical conditions. These procedures also cover transitional arrangements between schools.

General Record Keeping

The student's confidentiality should be protected and the TNS should seek permission from parents/carers before sharing any medical information with any other party.

The TNS will keep an accurate record of all medication administered, including the dose, time, date and supervising staff by using Department for Education's Template C.

CONTROLLED DRUGS (CDs)

Some Students may require routine, or emergency prescribed controlled drugs administering whilst at school. Controlled Drugs require additional safety controls for storage, administration and disposal, under the Misuse of Drugs Regulations 2001. The TNS should follow these to ensure that all legal requirements and best practice are adhered to.

A list of commonly encountered controlled drugs can be found at the following link:-

<https://www.gov.uk/government/publications/controlled-drugs-list--2/list-of-most-commonly-encountered-drugs-currently-controlled-under-the-misuse-of-drugs-legislation>

Guidance on how a controlled drug is classified can be found at the following link:

<https://www.gov.uk/government/publications/2010-to-2015-government-policy-drug-misuse-and-dependency/2010-to-2015-government-policy-drug-misuse-and-dependency#appendix-1-classifying-and-controlling-drugs>

An example of a medical condition that may require a controlled drug is ADHD, for which methylphenidate (Ritalin tm) may be prescribed.

Midazolam Buccal, which is a medication used for controlling seizures, is a Schedule 3 controlled drug, and does not require the same controls as other Schedule 1 and 2 controlled drugs under the legislation. However it is best practice to store and control this medication in the same way as other controlled drugs.

A controlled drug can only be admitted on the school premises if it is recorded in the student's individual healthcare plan – see the Department for Education's Template A: Individual Healthcare Plan. When a controlled drug is prescribed, and has to be administered during school hours, it should be highlighted on Template A. Extra training requirements should be highlighted and undertaken for staff administering a controlled drug. Advice should be sought from healthcare professionals, or the School Nurse, together with consultation with the parent/carers.

The following requirements should be met, in line with the above legislation:-

- storage:
 - the medication should be double locked, i.e. in an appropriate storage container, in a locked room. The medication may need to be kept refrigerated once opened, and this should be made clear on the IHCP.
 - named staff only should be allowed access to the medication. A plan for obtaining the medication for a medical emergency, or school evacuation, should be put into place.
- administering:

- two members of staff should be present when the drug is to be administered, to double check the dose is correct. One person will administer the dose, and the second person will witness its administration.
- record keeping:
 - a separate Controlled Drug register should be kept, to record each dose that is administered, and should be signed by the two members of staff who administer the medication. This register is to be kept for two years from the date of the last entry in the register.
 - if misuse of a controlled drug is suspected, all records should be checked by Senior Management and the Headteacher, and reported to the Police/Local Intelligence Network (LIN). Guidance on this should be sought from healthcare professionals.
- destroying
 - unused controlled drugs should be destroyed under specific controlled conditions. This should be referred to on the IHCP, and advice taken from healthcare professionals.

UNACCEPTABLE PRACTICE

Although school staff should use their discretion and judge each case on its merits with reference to the student's individual healthcare plan, the following is generally not acceptable practice.

The TNS will not:-

- prevent Students from easily accessing their inhalers and medication and administering their medication when and where necessary
- penalise Students for their attendance record if their absences are related to their medication condition, e.g. hospital appointments.
- require parents, or make them feel obliged, to attend school to administer medications, or provide medical support to their child.
- assume that every student with the same condition requires the same treatment
- ignore the views of the student or their parents; ignore medical evidence or opinion
- send Students with medical conditions home frequently for reasons associated with their medical condition or prevent them from staying for normal school activities, including lunch, unless this is specified in their individual healthcare plans
- send a student to the school office/medical room if they become ill unaccompanied, or with an unsuitable person

- prevent Students from drinking, eating or taking toilet or other breaks whenever they need to in order to manage their medical condition effectively
- prevent Students from participating, or create unnecessary barriers to children participating in any aspect of school life, including school trips, e.g. by requiring parents to accompany the student.

If a student misuses their medication, or anyone else's, their parent/carer is informed as soon as possible and the TNS's disciplinary procedures are followed.

The TNS will ensure that all staff responsible for administering medications understand that they must strictly adhere to the prescription dosage, and the implications for not doing so. This will be done at the time of agreeing to undertake this role.

Staff should be aware that they must not alter/amend any medications, i.e. by crushing tablets or increasing a dose if requested by the student. Specific written instructions will be given by a healthcare professional if there are any changes to a dose or methods of administration.

The TNS will make it clear to staff responsible for administering medicines of the implications for covertly taking medications and that the TNS will immediately undertake disciplinary action/police investigations as needed.

COMPLAINTS PROCEDURE

The TNS will ensure that any complaints concerning the support provided to Students with medical conditions will be investigated appropriately.

Should parent/carers be dissatisfied with the support provided, they should discuss their concerns directly with the TNS. If, for whatever reason this does not resolve the issue, they may make a formal complaint via the TNS's complaints procedure.

Making a formal complaint to the Department for Education should only occur if it comes within scope of section 496/497 of the Education Act 1996, and after other attempts at resolution have been exhausted.

It will be relevant to consider whether the TNS has breached the terms of its Funding Agreement, or failed to comply with any other legal obligation placed on it. Ultimately, parents (and Students) will be able to take independent legal advice and bring formal proceedings if they consider they have legitimate grounds to do so.

Apollo Partnership Trust – The Newbridge School
Section 3.4
Managing Medications on an Outing/Residential Visit

Risk assessments are completed before each school trip and outing. Risks for Students with known medical conditions are considered, as well as any potential risk to others.

Students who require short term medication for the duration of the trip/residential

Parent/carers complete medical forms at least three weeks before the visit at which point the TNS will establish, from parents/carers, the medication, circumstances in which it can be administered, the precise time the dose is given and the exact dose.

All medication must be provided in the original packaging as supplied from the pharmacy.

Pain Relief

Students/students who require regular/prescribed pain relief that needs to be taken whilst on an outing/residential visit must bring in their own supply of the medication and parents must complete a separate medication consent form. All student/student medication will be held in by the Visit Leader.

The TNS may take a central store of medication such as Calpol/paracetamol on a residential visit. Parental consent must still have been given for administration. This will be achieved as part of the parental consent to act in loco parentis in emergency situations. Prior to administering medication that has not been directly provided by the parent/carer, the Visit Leader will always attempt to contact the parent/carer to explain why the medication is being given.

Students with an Individual Healthcare Plan in place

For Students with known medical conditions, staff will make contact with the parent/carer in advance of the trip. This will ensure that they are fully briefed to ensure that there are adequate quantities of medication available, that the student's condition is stable, and which emergency details are required should the student need to have additional support. This is documented for the Group Leader.

For Early Years/Foundation Stage Students, where it is assessed that the student cannot self-manage their inhaler, Group Leaders will ensure that staff keep the inhalers for Students allocated to them. All doses administered need to be recorded.

Controlled drugs

The TNS will make every effort to accommodate Students with a medical condition who require controlled drugs to be administered when in the school's care, but off the school premises. For

a residential visit, consultation with the venue will need to take place, to ensure safe storage facilities will be in place.

Apollo Partnership Trust – The Newbridge School

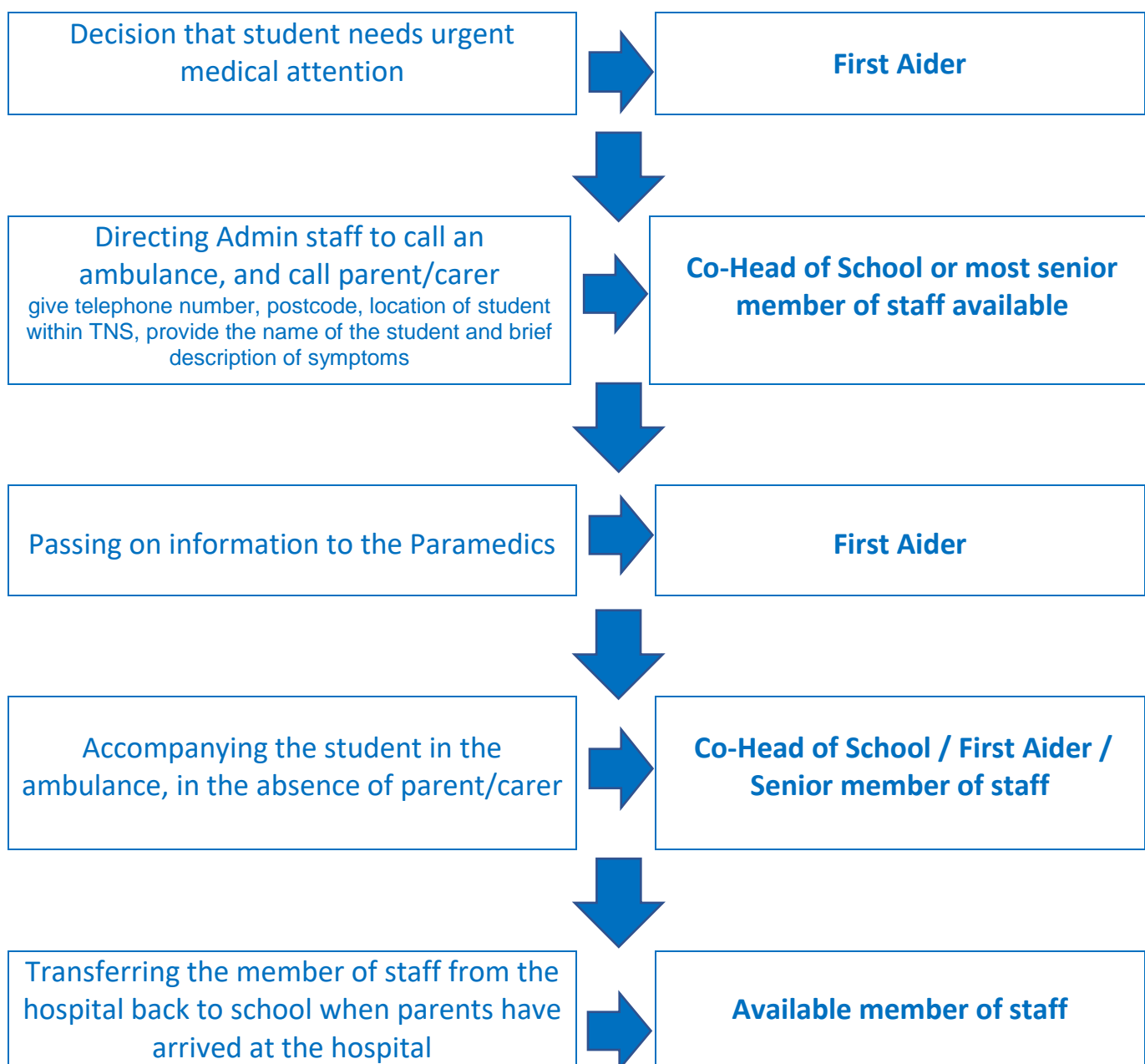
Section 3.5

Emergency Procedures

The flowchart follows Template F of the Department for Education statutory guidance.

Staff should not take Students to hospital in their own vehicle.

Where an Ambulance needs to be called in school, there are several roles which need to be fulfilled. The responsibility for these roles is fluid, to cover staff absence/cover. All staff should be aware of the procedures.



Apollo Partnership Trust – The Newbridge School

Section 3.6

Further Guidance / References

Royal Pharmaceutical Society of Great Britain (RPSGB) - The Handling of Medicines in Social Care

Department of Health - "Guidance on the use of emergency salbutamol inhalers in school – March 2015"

<https://www.gov.uk/government/publications/2010-to-2015-government-policy-drug-misuse-and-dependency/2010-to-2015-government-policy-drug-misuse-and-dependency#appendix-1-classifying-and-controlling-drugs>

<https://www.gov.uk/government/publications/controlled-drugs-list--2/list-of-most-commonly-encountered-drugs-currently-controlled-under-the-misuse-of-drugs-legislation>

https://www.gov.uk/government/uploads/system/uploads/attachment_data/file/645476/Adrenaline_auto_injectors_in_schools.pdf

LEGISLATION:

Section 2 of the **Health and Safety at Work Act 1974** and the associated regulations, provides that it is the duty of the employer (the governing body and TNS trust) to take reasonable steps to ensure that staff and Students are not exposed to risks to their health and safety.

Misuse of Drugs Regulations 2001 and associated regulations the supply, administration, possession and storage of certain drugs are controlled. Schools may have a student who has been prescribed a controlled drug.

The Medicines Act 1968 specifies the way that medicines are prescribed, supplied and administered within the UK and places restrictions on dealings with medicinal products, including their administration.

Regulation 5 of the School Premises (England) Regulations 2012 (as amended) provides that maintained schools must have accommodation appropriate and readily available for use for medical examination and treatment and for the caring of sick or injured Students. It must contain a washing facility and be reasonably near to a toilet. It must not be teaching accommodation. Paragraph 24 of the Schedule to the Education (Independent School Standards) Regulations 2014 replicates this provision for independent schools (including TNS schools and alternative provision academies)

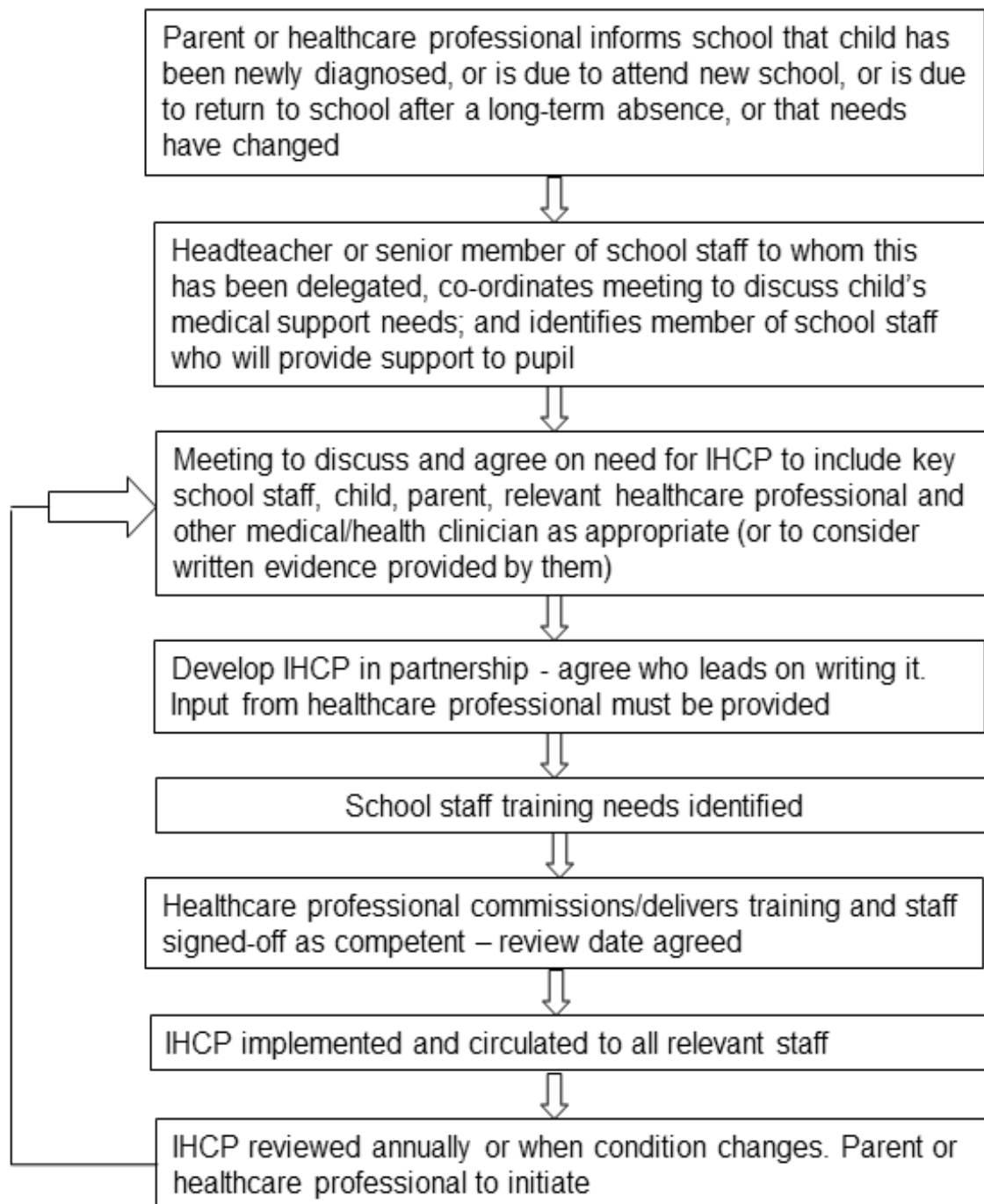
Section 100 of the Children and Families Act 2014 places a duty on governing bodies of maintained schools, proprietors of academies and management committees of student referral units (PRUs) to make arrangements for supporting Students at their school with medical conditions

Apollo Partnership Trust – The Newbridge School
Section 3.7
Department for Education Templates

- Appendix 1: model IHCP flowchart
- Appendix 2: specimen letter from parent/carer for use of emergency inhaler
- Appendix 3: specimen letter to inform parent/carer of use of emergency inhaler
- Appendix 4: specimen letter from parent/carer for use of emergency adrenaline auto-injector
- Appendix 5: body map

- Template A: individual healthcare plan (IHCP)
- Template B: parental agreement for setting to administer medicine
- Template C: record of medicine administered to an individual child
- Template D: record of medicine administered to all children
- Template E: staff training record – administration of medicines

Appendix 1: Model IHCP Flowchart



Appendix 2: Consent Form Use of Emergency Salbutamol Inhaler

Consent for use of emergency salbutamol inhaler for Students who have been prescribed with a personal salbutamol inhaler

Name of student:Date of Birth:.....

Class:.....

1. I can confirm that my child has been diagnosed with asthma / has been prescribed an inhaler [delete as appropriate].
2. My child has a working, in-date inhaler, clearly labelled with their name, which they will bring with them to school every day.
3. In the event of my child displaying symptoms of asthma, and if their inhaler is not available or is unusable, I consent for my child to receive salbutamol from an emergency inhaler held by the school for such emergencies.

Parent/carer signature..... Date:

Parent/carer name

Appendix 3: Specimen Letter to Inform Parents of Emergency Salbutamol Inhaler Use

Name of student:Date of

Birth:.....

Class:.....

Dear.....,

[Delete as appropriate]

This letter is to formally notify you that your child has had problems with their breathing today. This happened when

They did not have their own asthma inhaler with them, so a member of staff helped them to use the emergency asthma inhaler containing salbutamol. They were given puffs.

Their own asthma inhaler was not working, so a member of staff helped them to use the emergency asthma inhaler containing salbutamol. They were given puffs.

[Delete as appropriate]

Although they soon felt better, we would strongly advise that you have your seen by your own doctor as soon as possible and arrange for a new salbutamol inhaler to be provided and kept in school.

Yours sincerely,

Appendix 4: Consent Form Use of Emergency Adrenaline Auto Injector

Consent for use of emergency adrenalin auto injector for Students who have been diagnosed with severe allergies and have a prescribed personal adrenalin auto injector.

Name of student:Date of Birth:.....

Class:.....

1. I can confirm that my child has been diagnosed with a food (please state which food.....) / wasp/bee sting / latex allergy / [other allergy] and has been prescribed an adrenaline auto injector. [delete as appropriate].
2. My child has an in-date adrenaline auto injector, clearly labelled with their name, which they will have with them at school every day.
3. In the event of my child displaying symptoms of anaphylaxis shock, and if their own adrenaline auto injector is not available or is unusable, I consent for my child to receive an injection from an emergency adrenaline auto injector held by the school for such emergencies.

Parent/carer signature..... Date:

Parent/carer name

Appendix 5: Body Map

For use for Students who require assistance with the application of creams/ointments for medical reasons

(The body map must be completed by the parent/carer before any cream or ointment is applied at school)

Name of student:.....Date of Birth:

.....

Class:

Name of medication:

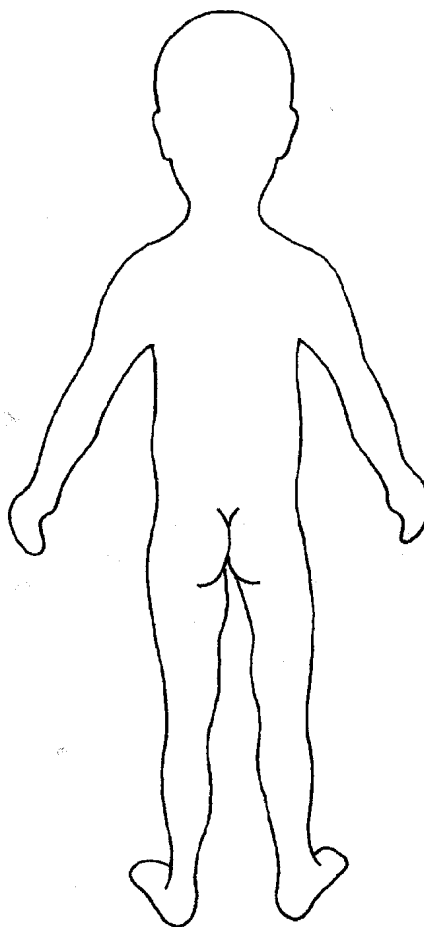
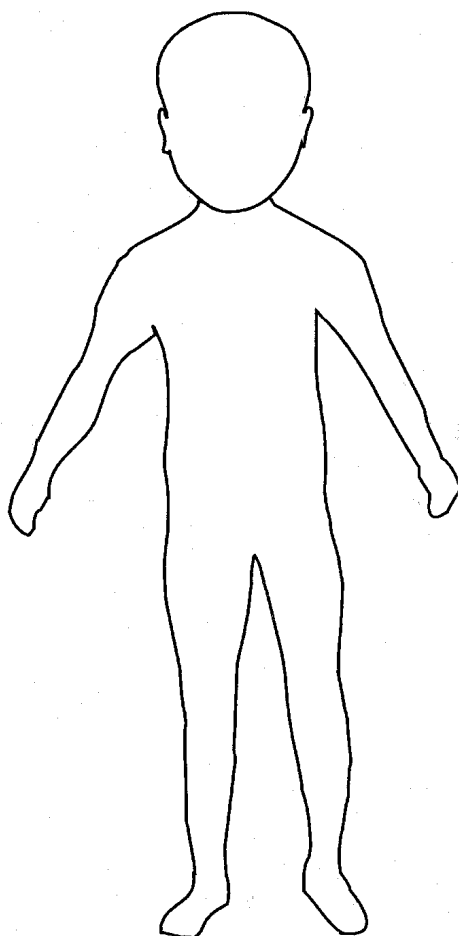
Reason for, and frequency of application:

.....

Name(s) of staff to apply prescribed cream/ointment:.....

.....

Indicate below the affected areas where cream/ointment may require applying.



Parent/carer signature Date

Parent/carer name

Record of application

Student Name:

Medication:

Date	Time	Affected areas applied	Staff name and signature

Template A: individual healthcare plan

If no healthcare professional input has been received, choose one of the following statement: Delete one or both as appropriate

Mild ill health (seasonal/childhood asthma or allergies of a mild nature)

The ill health condition of the student does not require direct input from a healthcare professional. Parents/carers are confident that they are able to provide sufficient information to enable the student to be safely supported at school.

More serious medical conditions

(insert student name) healthcare professional (insert name) has been requested to provide information/assist in the development of the Individual Healthcare Plan

The healthcare professional (insert name) has declined to provide information/assist (attach response or date/time if a phone call).

The information and management controls within this plan have been developed from the information provided by parents/carers only, to the best of their ability without the requested healthcare professional assistance.

Name of TNS/setting

Child's name

Group/class/form

Date of birth

Child's address

Medical diagnosis or condition

Date

Review date

Family Contact Information

Name

Phone no. (work)

(home)

(mobile)

Name

Relationship to child

Phone no. (work)

(home)

(mobile)

Clinic/Hospital Contact

Name

Phone no.

G.P.

Name

Phone no.

Who is responsible for providing support in TNS

Describe medical needs and give details of child's symptoms, triggers, signs, treatments, facilities, equipment or devices, environmental issues etc.

Name of medication – dose, method of administration, when to be taken, side effects, contra- indications, administered by/self-administered with/without supervision.

If this is a controlled drug – detail the arrangements required for storage, administering and disposal

Daily care requirements

Specific support for the student's educational, social and emotional needs

Arrangements for TNS visits/trips etc

Other information

Describe what constitutes an emergency, and the action to take if this occurs

Who is responsible in an emergency *(state if different for off-site activities)*

Plan developed with

Staff training needed/undertaken – who, what, when

Form copied to

Template B: parental agreement for setting to administer medicine

The TNS/setting will not give your child medicine unless you complete and sign this form, and the TNS or setting has a policy that the staff can administer medicine.

Date for review to be initiated by

Name of TNS/setting

Name of child

Date of birth

Group/class/form

Medical condition or illness

Medicine

Name/type of medicine

(as described on the container)

Expiry date

Dosage and method

Timing

Special precautions/other instructions

Are there any side effects that the TNS/setting needs to know about?

Self-administration – y/n

Procedures to take in an emergency

NB: Medicines must be in the original container as dispensed by the pharmacy

Contact Details

Name

--

Daytime telephone no.

Relationship to child

Address

I understand that I must deliver the medicine personally to

[agreed member of staff]

The above information is, to the best of my knowledge, accurate at the time of writing and I give consent to TNS/setting staff administering medicine in accordance with the TNS/setting policy. I will inform the TNS/setting immediately, in writing, if there is any change in dosage or frequency of the medication or if the medicine is stopped.

Signature(s) _____

Date _____

Template C: record of medicine administered to an individual child

Name of TNS/setting

Name of child

Date medicine provided by parent

Group/class/form

Quantity received

Name and strength of medicine

Expiry date

Quantity returned

Dose and frequency of medicine

Staff signature _____

Signature of parent _____

Date

Time given

Dose given

Name of member of staff

Staff initials

Date

Time given

Dose given

Name of member of staff

Staff initials

C: Record of medicine administered to an individual child (Continued)

Date			
Time given			
Dose given			
Name of member of staff			
Staff initials			

Date			
Time given			
Dose given			
Name of member of staff			
Staff initials			

Date			
Time given			
Dose given			
Name of member of staff			
Staff initials			

Date			
Time given			
Dose given			
Name of member of staff			
Staff initials			

Template E: staff training record – administration of medicines

Name of TNS/setting

Name

Type of training received

Date of training completed

Training provided by

Profession and title

I confirm that [name of member of staff] has received the training detailed above and is competent to carry out any necessary treatment. I recommend that the training is updated [name of member of staff].

Trainer's signature _____

Date _____

I confirm that I have received the training detailed above.

Staff signature _____

Date _____

Suggested review date _____

Template F: contacting emergency services

Request an ambulance - dial 999, ask for an ambulance and be ready with the information below.

Speak clearly and slowly and be ready to repeat information if asked.

1. your telephone number
2. your name
3. your location as follows [insert TNS/setting address]
4. state what the postcode is – please note that postcodes for satellite navigation systems may differ from the postal code
5. provide the exact location of the patient within the TNS setting
6. provide the name of the child and a brief description of their symptoms
7. inform Ambulance Control of the best entrance to use and state that the crew will be met and taken to the patient
8. put a completed copy of this form by the phone

Template G: model letter inviting parents to contribute to individual healthcare plan development

Dear Parent

DEVELOPING AN INDIVIDUAL HEALTHCARE PLAN FOR YOUR CHILD

Thank you for informing us of your child's medical condition. I enclose a copy of the TNS's policy for supporting Students at TNS with medical conditions for your information.

A central requirement of the policy is for an individual healthcare plan to be prepared, setting out what support each student needs and how this will be provided. Individual healthcare plans are developed in partnership between the TNS, parents, Students, and the relevant healthcare professional who can advise on your child's case. The aim is to ensure that we know how to support your child effectively and to provide clarity about what needs to be done, when and by whom. Although individual healthcare plans are likely to be helpful in the majority of cases, it is possible that not all children will require one. We will need to make judgements about how your child's medical condition impacts on their ability to participate fully in TNS life, and the level of detail within plans will depend on the complexity of their condition and the degree of support needed.

A meeting to start the process of developing your child's individual health care plan has been scheduled for xx/xx/xx. I hope that this is convenient for you and would be grateful if you could confirm whether you are able to attend. The meeting will involve [the following people]. Please let us know if you would like us to invite another medical practitioner, healthcare professional or specialist and provide any other evidence you would like us to consider at the meeting as soon as possible.

If you are unable to attend, it would be helpful if you could complete the attached individual healthcare plan template and return it, together with any relevant evidence, for consideration at the meeting. I [or another member of staff involved in plan development or student support] would be happy for you contact me [them] by email or to speak by phone if this would be helpful.

Yours sincerely